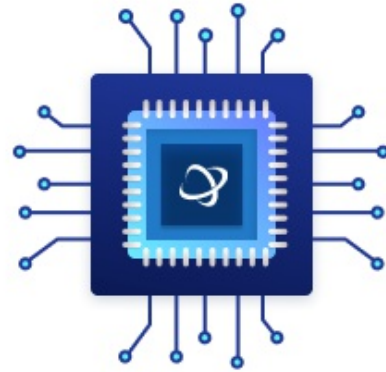


Up/Down Conv Mixer 36GHz Automotive 4Pin Die Tray

Manufacturers	Analog Devices, Inc
Package/Case	Chip
Product Type	RF Integrated Circuits
RoHS	Green
Lifecycle	



Images are for reference only

Please submit RFQ for HMC1106 or [Email to us: sales@ovaga.com](mailto:sales@ovaga.com) We will contact you in 12 hours.

[RFQ](#)

General Description

The HMC1106 is a double-balanced mixer, which can be used as an upconverter or a downconverter, with DC to 24 GHz at the IF port, 20 to 50 GHz at the LO port, and 15 to 36 GHz at the RF port. This passive MMIC mixer is fabricated with GaAs Shottky diode technology. All bond pads and the die backside are Ti/Au metallized and the Shottky devices are fully passivated for reliable operation. All data shown herein is measured with the chip in a 50 Ohm environment and contacted with RF probes.

APPLICATIONS

Features

Passive: No DC Bias Required

Low LO Power: +15 dBm

High LO/RF Isolation: 42 dB

Wide IF Bandwidth: DC to 24 GHz

Upconversion & Downconversion Applications

Die Size: 1.79 x 1.46 x 0.1 mm

Application

Microwave Point-to-Point Radios

SATCOM

Test Equipment & Sensors

Military End-Use

Automotive Radar

Related Products



HMC3653LP3BE

Analog Devices, Inc
QFN-12



HMC441LP3E

Analog Devices, Inc
QFN-16



HMC253AQS24

Analog Devices, Inc
24-SSOP (0.154, 3.90mm Width)



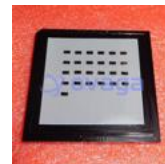
HMC948LP3E

Analog Devices, Inc
LP3



HMC358MS8GE

Analog Devices, Inc
MSOP-8



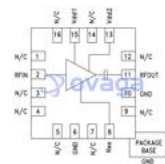
HMC490

Analog Devices, Inc
SMD



HMC453ST89E

Analog Devices, Inc
ST89E



HMC618ALP3E

Analog Devices, Inc
QFN-16