

Off-Line SMPS Current Mode Controller with integrated 650V Startup Cell/CoolMOS,AC/DC Switching Converters Off-Line SMPS Currnt Mode CTRLR 650V

Manufacturers	Infineon Technologies Corporation
Package/Case	DIP-8
Product Type	Power Management ICs
RoHS	Green
Lifecycle	



Images are for reference only

Please submit RFQ for ICE3A2565 or [Email to us: sales@ovaga.com](mailto:sales@ovaga.com) We will contact you in 12 hours.

[RFQ](#)

General Description

ICE3A2565 is a type of integrated circuit (IC) that belongs to the ICE3x series of controllers designed for switched-mode power supplies (SMPS). It is a highly efficient resonant mode controller that operates in continuous conduction mode (CCM) for offline flyback applications. Some of its features and applications are as follows:

Features

Wide input voltage range: 85 VAC to 265 VAC

Integrated 650 V CoolMOS™ MOSFET for high efficiency

Frequency jittering for improved electromagnetic compatibility (EMC)

Adjustable burst mode frequency for reduced standby power consumption

Auto-restart protection for over-temperature, over-voltage, and output short circuit conditions

Built-in soft start for smooth startup

Pulse frequency modulation (PFM) mode for low load efficiency

Protection against open feedback loop and shorted secondary rectifier

Over-current protection with adjustable threshold

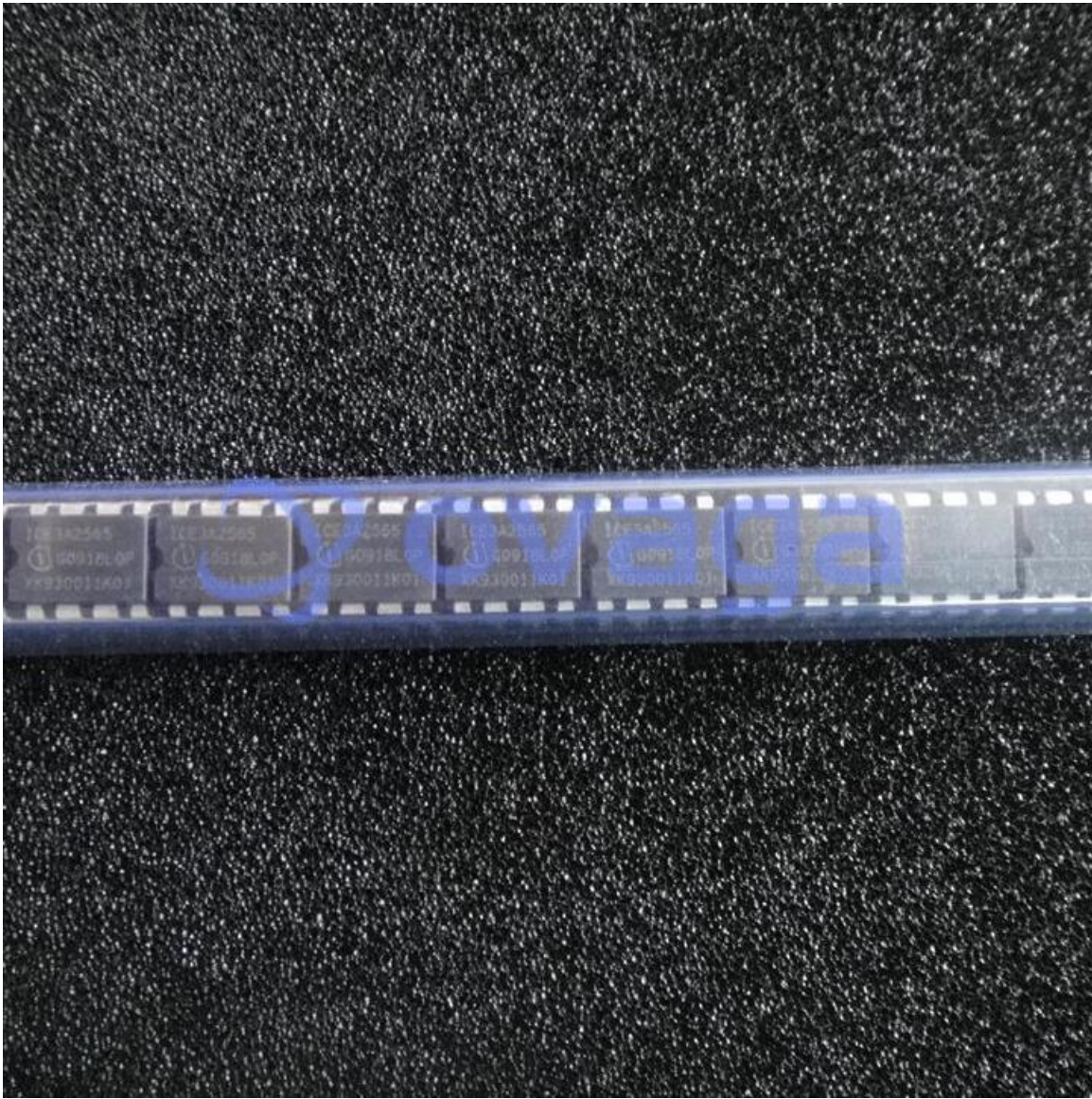
Compact form factor in a DIP-8 package

Application

Offline flyback power supplies for a wide range of applications such as LED lighting, consumer electronics, industrial controls, and household appliances

AC/DC power converters for auxiliary power supplies, standby power, and battery chargers





Related Products



[ICE3AR0680JZ](#)

Infineon Technologies Corporation
DIP7



[ICE2B0565](#)

Infineon Technologies Corporation
DIP-8



[ICE2B365](#)

Infineon Technologies Corporation
DIP-8



[ICE3BR0665JZ](#)

Infineon Technologies Corporation
DIP-7



[ICE3BR0665JF](#)

Infineon Technologies Corporation
PG-TO220-6



[ICE1PCS02](#)

Infineon Technologies Corporation
DIP-8



[ICE2PCS02](#)

Infineon Technologies Corporation

DIP-8



[ICE2A380P2](#)

Infineon Technologies Corporation

TO-220