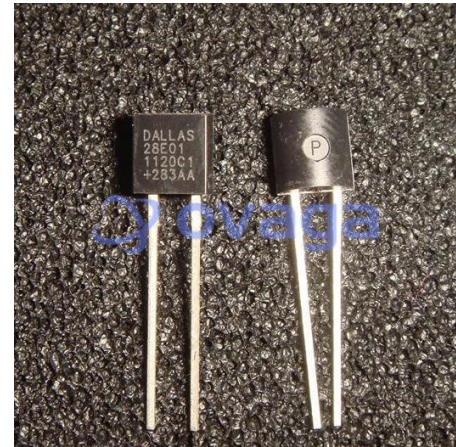


1Kb Protected 1-Wire EEPROM with SHA-1 Engine

Manufacturers	<a href="#">Analog Devices, Inc</a>
Package/Case	TSOC-6
Product Type	Programmable Logic ICs
RoHS	
Lifecycle	



Images are for reference only

Please submit RFQ for DS28E01-100 or [Email to us: sales@ovaga.com](mailto:sales@ovaga.com) We will contact you in 12 hours.

[RFQ](#)

## General Description

DS28E01-100 is a 1-Wire EEPROM (Electrically Erasable Programmable Read-Only Memory) chip manufactured by Maxim Integrated. It features a 1024-bit memory array, a unique 64-bit ROM identification number, and a 1-Wire interface, which enables communication over a single data line with minimal hardware requirements.

## Features

- Single-contact 1-Wire interface
- 1024 bits of EEPROM memory
- 64-bit ROM identification number
- 8-byte scratchpad memory
- Three operating modes: write-protect mode, EPROM-emulation mode, and OTP (one-time programmable) EPROM mode
- Power-on reset function
- Operating temperature range of -40°C to +85°C

## Application

- Authentication of peripherals and accessories in mobile devices and other electronic systems
- Secure storage of sensitive data, such as encryption keys, in embedded systems and smart cards
- Digital control and calibration of sensors and other devices in industrial and automotive applications
- Remote sensing and control of distributed devices in building automation and security systems

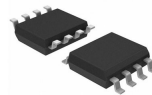


**Related Products**



[DS1821C](#)

Analog Devices, Inc  
TO-92



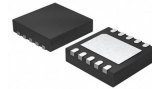
[DS28E07P+T](#)

Analog Devices, Inc  
TSOC



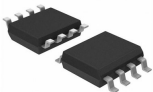
[DS2431Q+](#)

Analog Devices, Inc  
TDFN6



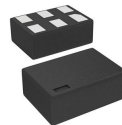
[DS28E07Q+T](#)

Analog Devices, Inc  
TDFN



[DS2431P+TR](#)

Analog Devices, Inc  
TSOC-6



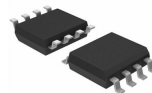
[DS2431Q+TR](#)

Analog Devices, Inc  
TDFN6



[DS2460S](#)

Analog Devices, Inc  
SOIC-8



[DS2432P+T&R](#)

Analog Devices, Inc  
TSOC-6