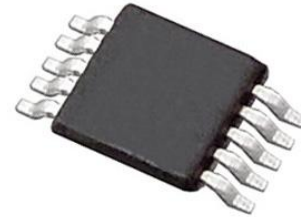


ESD Suppressors / TVS Diodes 4-ch. 0.7pF Ultra Lo

Manufacturers	ON Semiconductor, LLC
Package/Case	MSOP-10
Product Type	ESD Suppressors
RoHS	Rohs
Lifecycle	



Images are for reference only

Please submit RFQ for CM1224-04MR or [Email to us: sales@ovaga.com](mailto:sales@ovaga.com) We will contact you in 12 hours.

[RFQ](#)

General Description

The CM1224 family of diode arrays has been designed to provide ESD protection for electronic components or subsystems requiring minimal capacitive loading. These devices are ideal for protecting systems with high data and clock rates or for circuits requiring low capacitive loading. Each ESD channel consists of a pair of diodes in series which steer the positive or negative ESD current pulse to either the positive (VP) or negative (VN) supply rail. A Zener diode is embedded between VP and VN, offering two advantages. First, it protects the VCC rail against ESD strikes, and second, it eliminates the need for a bypass capacitor that would otherwise be needed for absorbing positive ESD strikes to ground. The CM1224 protects against ESD pulses up to $\pm 8\text{kV}$ per the IEC 61000-4-2 standard. These devices are particularly well-suited for protecting systems using high-speed ports such as USB 2.0, IEEE1394 (Firewire®, iLink™), Serial ATA, DVI, HDMI and corresponding ports in removable storage, digital camcorders, as well as DVD-RW drives and other applications where extremely low loading capacitance with ESD protection are required. The CM1224 family of devices has lead-free finishing in a small package footprint.

Features

Two or four channels of ESD protection up to 8kV contact discharge

General purpose high-speed data line ESD protection

Low channel input capacitance of 0.7pF typical with Minimal capacitance change with temperature and voltage

Channel input capacitance matching of 0.02pF typical is ideal for differential signals

Zener diode protects supply rail and eliminates the need for external by-pass capacitors

Application

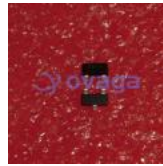
ONSEMI

Related Products



[CM1231-02SO](#)

ON Semiconductor, LLC
SOT23-6



[CM1213A-01SO](#)

ON Semiconductor, LLC
SOT-23-3



[CM1214A-01SO](#)

ON Semiconductor, LLC
SOT-23-3



[CM1213-02SO](#)

ON Semiconductor, LLC
SOT-23-5



[CM1213-08MR](#)

ON Semiconductor, LLC
MSOP-10



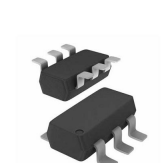
[CM1213-06SM](#)

ON Semiconductor, LLC
SOIC-8



[CM1293A-02SR](#)

ON Semiconductor, LLC
SOT-143



[CM1213A-02SO](#)

ON Semiconductor, LLC
SC-74